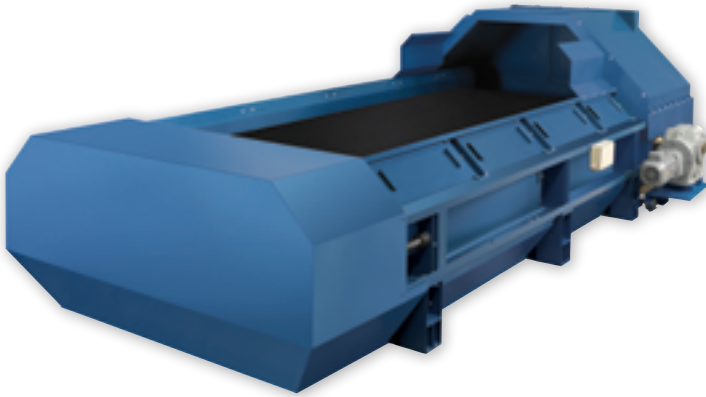


- Accuracy:  $\pm 0,5\%$
- Available in 3 standard width 1400, 1600 and 1800
- Easy maintenance and commissioning
- Flowrange 420 to 600 m<sup>3</sup>/h



Cement  
Construction materials  
Gypsum  
Steel  
Mines

**GIGRAVIT**



- ✓ Modular construction
- ✓ Adapted and smooth surfaces
- ✓ High rigidity: welded girders
- ✓ Auto-centring belt system
- ✓ Turn-down ratio : 1:10 ; 1:20 ; 1:100

**Function:**

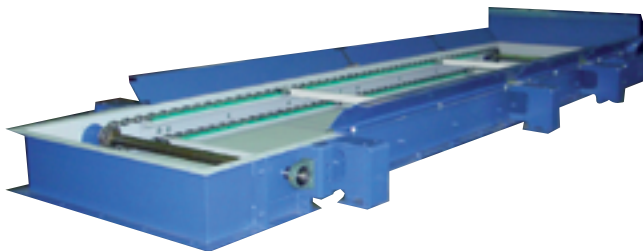
The material flows from the storage silo through the inlet onto the belt and is conveyed to the weigh bridge. Taking into account the distance between the weigh bridge and the discharge point, the flowrate is calculated according to the load at the discharge point and the belt speed.

The flow rate is kept constant by the SCM 2 controller modifying the belt speed according to the load and the setpoint applied.

**Options :**

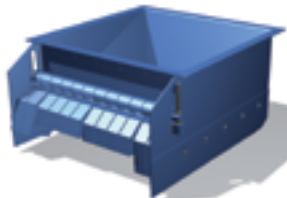
**Spillage Conveyor:**

One ore more scraper(s) driven by two chains recover the particles that escaped from the weighfeeder and convey it to the common discharge point.



**Hammer Gate :**

This gate limits the height of the extraction section while enabling the passage of oversized material lumps, the mobile elements (hammers) lifting then returning to their original position once the material lumps have gone through.



**Other options:**

- Inlets : Vibrating / elongated / rock-box
- Discharge paddle wheel
- Rod closing gate / cut-off gate
- Material cover
- High temperature resistant belt
- Digital load cell

**Controller:**

Weighfeeder signals and information, such as Weight, Speed, Belt tracking, Belt index are directly connected to the SCM controller. The SCM controller calculates the actual flowrate, totalizes the conveyed material and generates the control signal for the variable speed drive.

Detailed alarm informations are obtained via the display (SDU).

\* SCM2 Field or Panel version:  
see : *SCM2F-260.001-E. or SCM2-P.260.001-E.b*



SCM2-Panel

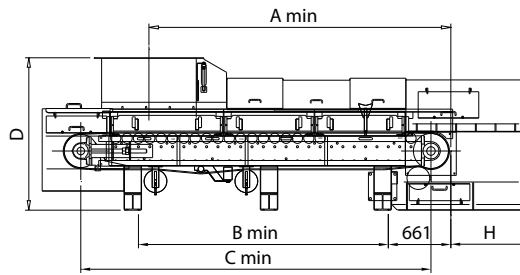
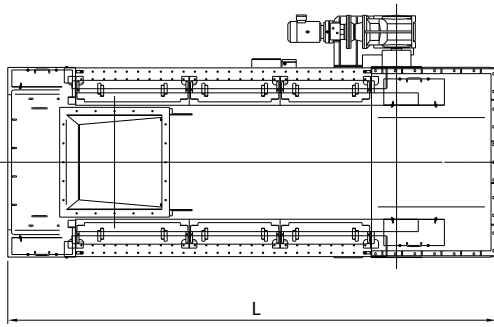


SDU



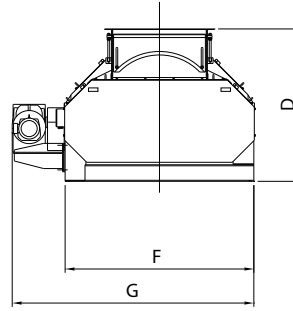
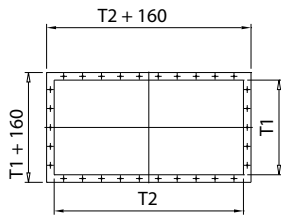
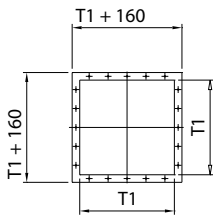
SCM2-Field

**Layout**



1. Standard inlet

2. Elongated inlet



**Dimensions and Flowrates**

Given for well flowing material and for a maximum belt speed of 0,3 m/s

Belt width	L	T1	T2	A min	B min	H	C min	D	F	G	Weight (Kg)	Max. flowrate [m³/h]
1400	C+1460	1000	2000	1990	1440	840	2500	1610	1994	2560	3350	420
1600		1200		2490	2040		3100		2194	2760	3960	520
1800		1400		2390	2040		3100		2394	2960	4440	600

Dimensions in mm

The above dimensions are given for the smallest model of each type.  
For an elongated inlet, add one elongation step of 600mm.  
Each model is available in 15 elongation steps of 600 mm length.  
For further details please ask our general layout.

**Technical data**

Motor	AC
Protection class	IP55
Rating	2,2 - 9,2 kW
Gear unit	Hollow shaft helical bevel gear
Transmission	Direct on head drum
Working temperature	-20°C to +60°C
Speed sensor	Digital encoder
Girders and cover	Steel
Conveyor belt	Rubber: endless vulcanized
Corrosion protection	Primer, Finish coat
Color and coating	RAL 5000 blue, 80 μ standard